

April 2011

La Lavandería



Rancho Guajome Adobe County Park

Barbados: Island Stylin'

At the end of the Lesser Antilles island chain (just 300 miles to the north of Venezuela) lies the island country of Barbados. Its residents call themselves Bajans (pronounced baay-johns), and life seems to revolve around the four C's: cricket, cooking, Calypso and Christianity (I borrowed that line from a guide-book).

Some of the highlights of visiting Barbados include the pristine, white sand beaches. You have your choice of the rugged Atlantic coast (pirate heaven) or the calm Caribbean side (billionaire retreat). The public transport is entertaining, with yellow, "Rasta" buses speeding around blaring reggae

(only \$2 anywhere on the island). The food is great too, especially the flying fish sandwich with Bajan Hot Pepper Sauce. However, as with many islands, supplies and meals can be expensive if you don't stick to the local hangouts, like the rum shacks that serve chicken, rice and beans...yum.

The Bajan people are warm and friendly, even when a tourist, like myself, tries to cram on to a bus with his surfboard at rush hour. The Bajan accent takes some getting used to, and I can't even begin to explain the rich multitude of sayings and proverbs locals use, like "De longer yuh live de more yuh hear." Which is used as a response to a surprising bit of news or information.

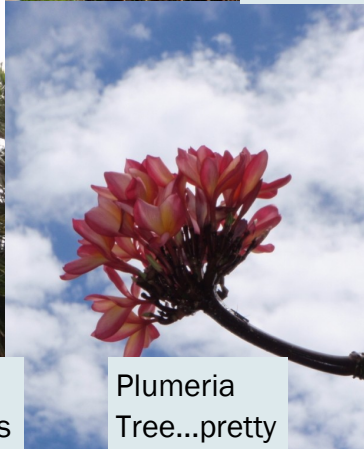
-J. Schwartze, Roaming Ranger



Colorful Bajan houses overlooking the East Coast of the Island



A rare Pot-Tail Palm from Sumatra at the Botanical Gardens



Plumeria Tree...pretty



Two-Man Fruits...it takes two men to pick one, they are huge!

Ranger's Report: Our Friend the Bug

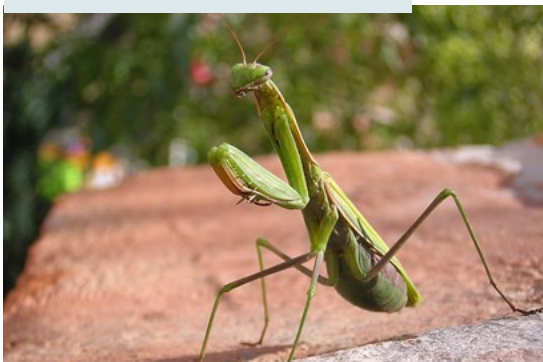
Now that spring is here, we can expect to be seeing more insects in our landscapes. Many insects, also referred to as invertebrates and arthropods, feed on plants in our gardens, landscapes and crops. Some insects can be considered pests because they are detrimental to the aesthetic quality of plants, and some can even lead to the devastation of entire crops. Currently, in San Diego County we have quarantines in place for the Asian Citrus Psyllid, Gold-spotted Oak Borer and Mediterranean Fruit Fly.

Some insects are considered beneficial or predatory, and will feed on insects or plants that may be detrimental or invasive. For example, there are several beneficial insects that will attack the *Arundo donax* plant, which is highly invasive and can be found clogging the banks of the San Luis Rey River (it looks similar to tall corn or bamboo). Insects that control Arundo Grass include, corn borers, aphids, spider mites and a sugar cane moth-borer from Barbados. Use of insects (i.e. biological control) to control weeds and pests is an important part of a holistic

approach to managing any landscape, park, forest or crop. Biological control measures (i.e. insects) can be less detrimental to the environment than spraying toxic pesticides that can find their way into groundwater and waterways. However, using insects for control of pests and weeds can be a double-edged sword. In some cases, the insects introduced to control a pest, end up becoming a pest if they begin to feed on other desirable plants or beneficial insects. Luckily, we have agricultural scientists that perform the research necessary to determine the impact of introducing insects to ecosystems as a biological control.

Within San Diego County, the Dept. of Agriculture, Weights and Measures (AWM) is the main resource for any information or questions related to invasive pests and beneficial insects. Visit www.co.san-diego.ca.us/awm/ for more information. The AWM Department can also help to identify insects, plants or diseases that you may have in your own landscape.

Beneficial Bugs:



Praying Mantis

Twice Stabbed Lady-Beetle



Green Lacewing



Sikes Adobe Docents Tour RGA

The Group Braved the Early March Rain to Visit The Other Vista Adobe

Docents from the Sikes Adobe in Escondido took a tour with Ranger Schwartze in March. One of the Sikes docents was actually a California State Parks Historian, having served at San Juan Capistrano and other historic sites throughout California.

At least one interesting fact that I learned from our visitors, was the use of *manta* or cloth on the ceilings within adobe structures. Apparently, the *manta* provided decorative, as well as, functional aspects. Most importantly the *manta* helped to catch any rodent or bird droppings

and errant pieces of detritus crumbling from the ceiling.

There is always a certain kinship with fellow historic site stewards, and the exchange of information and ideas between like groups helps improve each site's management, program implementation and event promotion. We wish the folks at the Sikes Adobe well and hope to visit them in the near future.



Photo Courtesy of Richard Edwards

Boy Scout Campout at the Rancho

Troop 799 visited the Rancho in March, and camped out for the weekend. We will be expecting them again in June for Adobe Days. As always, they were well-behaved, tidied up nicely and made some great big pancakes.



Important Dates and Events @ RGA

April 5th: Docent Meeting 10am @ Graham House/ Ranger Office

April 13th: Furniture Committee Meeting 9:30am @ Graham House/Ranger Office

April 14,21: School Tours



***Sign up now for school tours, weekend tours and gift shop shifts! Make it simple, just call the park or email us. 760-724-4082/ Jason.schwartz@sdcounty.ca.gov**

Rancho Buena Vista Adobe Docent Tour Rancho Guajome

In March, RBVA docents paid a special visit to Guajome Adobe for a tour by some of our fine docents Pat Obez, Tina and Jerry Colling and Chris Magallon. Jerry and Chris impressed our honored guests with some pleasant tunes on the adobe and chapel organs. In turn, RBVA docents have invited us for a tour of their site.



- ◆ Docent Meeting @ the Graham House @ 10am on the 1st Tuesday of every month
- ◆ Furniture Committee @ the Graham House @ 9:30am on the 2nd Wednesday of every month

Park Projects & Updates

New Pergola Finished

The new garden pergola is finished thanks to live-on caretaker David Duran and park staff.

Trail Work Underway

Pedestrian access gates will soon be installed in the front and rear of park. We have already started trail work at the front entrance to the park. New trail signage has also been installed throughout the park.

Adobe Exterior Painting

We are continuing painting exterior shutters and doors around the adobe, and repairing a number of shutters.

Troop 799 Begins Fence Project

Local Vista Boy Scouts took down the old, rickety fence at the office entrance driveway. They will be installing new fencing shortly.



FYI: Google Earth Application

Take a look at this aerial view of the adobe. Using the GoogleEarth program we were able to design our new irrigation map. In addition, we can use the application to determine area measurements. For example, if a wedding customer wants to setup a canopy on the west veranda lawn, we can simply take measurements from our aerial photographs. We will also be using the software to create the layouts for our future events, such as, Adobe Days. GoogleEarth is a free program available through Google. If you look close I think you can see park staff near the West Veranda lawn!





General County Info

**Main Office Address:**

County of San Diego
Department of Parks and Recreation
5500 Overland Dr. Suite 410
San Diego, CA 92123

County Parks and Recreation:

Web Address: www.sdparks.org

San Diego County Parks Society

P.O. BOX 957
Bonita, CA 91908
SDCPSOC@aol.com
(619) 267-7323 office
(619) 267-7329 fax

General Information & Questions:

Dept. Phone: (858) 694-3030
Park Office: (760)724-4082

E-mail:

Hector.live@sdcounty.ca.gov
Jason.schwartz@sdcounty.ca.gov

Reservations:

(877) 565-3600; M-F 8am-5pm
or on-line at: www.sdparks.org

**Rancho Guajome Adobe County Park**

2210 N. Santa Fe Dr.
Vista, CA 92083

Office: (760) 724-4082
Gift shop: (760) 940-8260
Fax: (760) 732-3953
E-mail: hector.live@sdcounty.ca.gov

A legacy preserved