

December 2011

La Lavandería



Rancho Guajome Adobe County Park

Meet RGA's Newest Docent Dennis Ditchfield

Say hello to Dennis Ditchfield, Rancho Guajome's newest recruit. Dennis was born and raised in New York City, in the borough of Queens. He has lived in Washington state and Canada, but now calls Oceanside home. Brought to Oceanside by our mild weather, Dennis will not be missing the "dreary" Eastern seaboard this winter. Dennis and his wife, Pat, (and cat, TK) chose San Diego County because of its "perfect weather, hills, and lots to do." Some of Dennis' hobbies include reading, walking, fitness, travel (Costa Rica is a favorite) and eating out. He has worked in social services, and as a teacher. In fact, he used to teach in a one-room schoolhouse in Canada. His daughter, Jaime, lives in Ottawa, and is an economist.

As a docent, Dennis would like to focus on and learn more about the connections between Californios and Americans. He would also like to explore the transition from a mission based system to an American system. His interests also include adobe architecture.

Dennis has already begun leading tours. Look for him at the next special event. Thanks and welcome to the Rancho Guajome family Dennis!



Dennis Ditchfield and his wife, Pat

Ranger's Report: Pest and Plant Quarantines

Protecting the County's Multi-Billion Dollar Agriculture Industry is a Game of Hide and Seek

Inspectors with a variety of government agencies at the federal, state and county level work together to keep exotic pests and other potentially harmful pests in check. Pests include any invasive insect, weed and disease that can threaten agriculture and environments inside and outside of California.

One of the first California pest quarantines was for grape phylloxera in 1899. Now there are 25 active exterior quarantines and 22 interior quarantines.

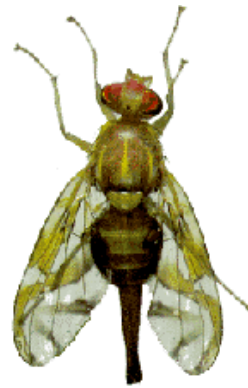
If you have ever driven into California, you have most likely passed through one of 16 border inspection stations located at entry points. These stations are used to keep pests, such as, plant diseases, harmful insects and animals out of California (referred to as exterior quarantines) However, there are also interior quarantines that keep existing pests within California, so that they are not exported to other states or countries. Exporting a known pest like the Mediterranean Fruit Fly (*Ceratitis capitata*) is not only illegal, it could cause importers to place quarantines against California nursery stock, fruits and/or vegetables.

Some of the more common and harmful pests include:

- ◆ Asian Citrus Psyllid
- ◆ Asian Longhorn Beetle
- ◆ Oriental Fruit Fly

- ◆ Japanese Beetle
- ◆ Gypsy Moth
- ◆ Red Imported Fire Ant

There are a plethora of other invasive insect pest, plant diseases, weeds and animal pests that are included in exterior and interior quarantines. One of the best resources for learning more about quarantines and pests in California is on the California Department of Food and Agriculture's website at www.cdffa.ca.gov



Mexican Fruit Fly



Light Brown Apple Moth



Diaprepes Root Weevil



New Sign Answers Popular Visitor Query

We've heard it many times before from many visitors, "So, what did the rancho look like way back then?" Well, now we have an interpretive panel with a photograph that will give visitors a much better idea of what Rancho Guajome actually looked like over 120 years ago.

A coordinated effort between RGA docents and the parks department led to the funding, design and fabrication of a landscape perspective of the Rancho back in 1891.

The sign was actually made to take to

promotional events like parades and farmers' markets, however it will have a prominent place near the gift shop so everyday visitors can get a better perspective of the Rancho as it once was. Ellen Sweet from the County Park History Center provided the photograph, while District Manager, Jake

Enriquez oversaw the design. Docents Wayne Mathias and Danny Rupp fabricated the frame that holds the panel in place-- a job which had them working late in to the night trying to make their deadline for its inaugural parade.



Wayne, Jake and Danny with the finished product.



On the RGA "float" at the AGSEM Harvest Parade



The sign will reside next to the gift shop.

Important Dates and Events @ RGA

Dec 6th : Docent Meeting @ the Graham House @ 10am.

No Furniture Meeting in December!



*Sign up now for school tours, special events, weekend tours and gift shop shifts! Make it simple, just call the park or email us:

760-724-4082/Jason.schwartz@sdcounty.ca.gov

County Parks Earns National Accreditation

The County of San Diego Dept. of Parks and Recreation attained an important milestone by becoming the first county in California to be accredited by the Commission for Accreditation of Park and Recreation Agencies (CAPRA). There are only 13 other counties in the United States that have received this honor. The designation comes after a two-year self-assessment by the department. The final product of the self-assessment, or Cost Recovery, Resource Allocation and Revenue Enhancement Study, is available to the public online at: http://www.sdcounty.ca.gov/parks/cost_recovery.html The study outlines near and long-term strategies that will help guide the parks department. Implementation of some strategies will begin immediately while others are more long-term, such as, capital improvements. Stay abreast of any changes or improvements at the park level (i.e. Rancho Guajome) by coming to monthly docent meetings.



- ◆ Docent Meeting @ the Graham House @ 10am on the 1st Tuesday of every month
- ◆ Furniture Committee @ the Graham House @ 9:30am on the 2nd Wednesday of every month

Day of the Dead

Photos by Wayne Mathias
and Hector Live

First-Time Event Turns Out to be Quite Lively

Here are a variety of photographs from our most recent special event.



Chris Milkie, AGSEM volunteer, helping out at the event. Thanks to Chris for his help. He will also be helping out at Rancho Christmas in November.

Once again Escaramuza Charra las Golondrinas wowed the crowd with their equestrian talents, look for them at Rancho Christmas as well.



Altar prepared by Paula White honoring her late husband and docent, Don White



General County Info



Main Office Address:

County of San Diego
Department of Parks and Recreation
5500 Overland Dr. Suite 410
San Diego, CA 92123

General Information & Questions:

Dept. Phone: (858) 694-3030
Park Office: (760)724-4082

County Parks History Office

(858) 966-1305
History.DPRCenter@sdcounty.ca.gov

E-mail:

Hector.live@sdcounty.ca.gov
Jason.schwartz@sdcounty.ca.gov

San Diego County Parks Society

P.O. BOX 957
Bonita, CA 91908
SDCPSOC@aol.com
(619) 267-7323 office
(619) 267-7329 fax

Reservations:

(877) 565-3600; M-F 8am-5pm
or on-line at: www.sdparcs.org



Rancho Guajome Adobe County Park

2210 N. Santa Fe Dr.
Vista, CA 92083

Office: (760) 724-4082
Gift shop: (760) 940-8260
Fax: (760) 732-3953
E-mail: hector.live@sdcounty.ca.gov

A legacy preserved